

FIRST DESTINATION SURVEY

2014

IPFW GRADUATES: IMPACTING OUR REGION



*The majority of IPFW graduates—91 percent—
said they will continue to live and work in Indiana,
contributing to our state’s cultural, intellectual,
and industrial momentum.*

CAREER SERVICES

INDIANA UNIVERSITY
PURDUE UNIVERSITY
FORT WAYNE





FIND OUT WHAT OUR NEWEST ALUMNI HAVE BEEN UP TO



Each year, IPFW Career Services conducts a survey with recent graduates about their plans for the future and where their degrees will take them. Our office then compiles that data into the *First Destination Survey*, a “snapshot” of what’s possible with a degree from IPFW.

SUPPORTING IPFW’S MISSION

The responses we collect help future Mastodons prepare for their career and post-graduation goals.

The IPFW Career Services *First Destination Survey* provides comprehensive and reliable data that can be used to accurately inform and shape career expectations of current undergraduates, new alumni, and prospective students.

ABOUT CAREER SERVICES

IPFW Career Services offers a variety of resources to meet the career development needs of IPFW students and alumni, including career counseling, self-assessments, and internship and job search assistance.

Students who need help choosing a major or career can take our career planning class, EDUC X210 or IDIS 115.

In addition, Career Services coordinates various programs throughout the year to assist students and alumni with their job search, including career fairs and networking events.

ABOUT THIS SURVEY

We surveyed students graduating from IPFW in December 2013, May 2014, and summer 2014. A total of 1,434 graduates

Equally important, the survey facilitates IPFW’s compliance with the outcomes data requirements of the *Higher Education Opportunities Act*.

It also provides accurate post-graduation outcomes information to the IPFW community at large, parents, the media, and employers and hiring organizations.

Finally, many companies post a variety of employment opportunities with our office. Work-study, part-time, full-time, and internship opportunities are available on **IPFW JobZone** (ipfw.edu/jobzone), and our free job and résumé database is available to IPFW students and alumni.

Stop by our office in Kettler Hall, Room 109, or visit us at ipfw.edu/career to learn more about how we can assist you in preparing for and pursuing your career goals.

received the *First Destination Survey* and 426 participated, with a response rate of 30 percent (N=426).

CONTENTS



IPFW Majors Represented In The 2014 Survey	5
What's Happening After Graduation	6
Where Graduates Contribute Their Knowledge And Expertise	7
Pursuing Career And Academic Goals	9
What's Happening After Graduation	10
What About Graduate School?	11
Employment Destination	12
Hands-On Training Benefits	13
Regional Employers	14

74%

of the graduates who are now employed report the position they found was related to their career goals.

82%

of the class of 2014 is employed or continuing their education.

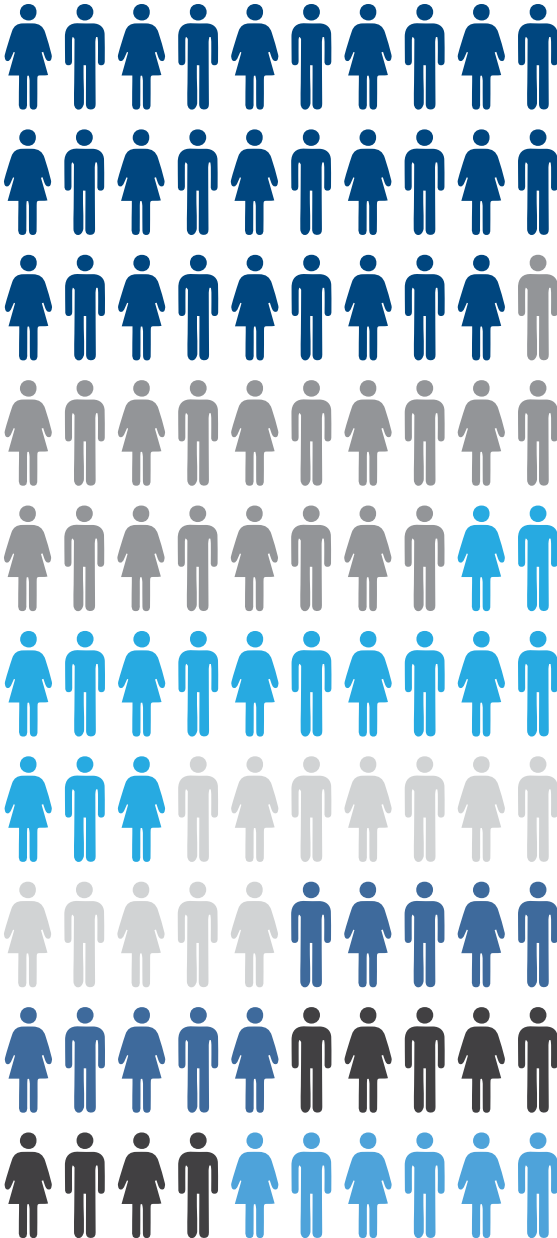
78%

of respondents who are now employed are working in the 10 counties that make up northeast Indiana.

44%

reported participating in at least one form of experiential learning.

IPFW MAJORS REPRESENTED IN THE 2014 SURVEY

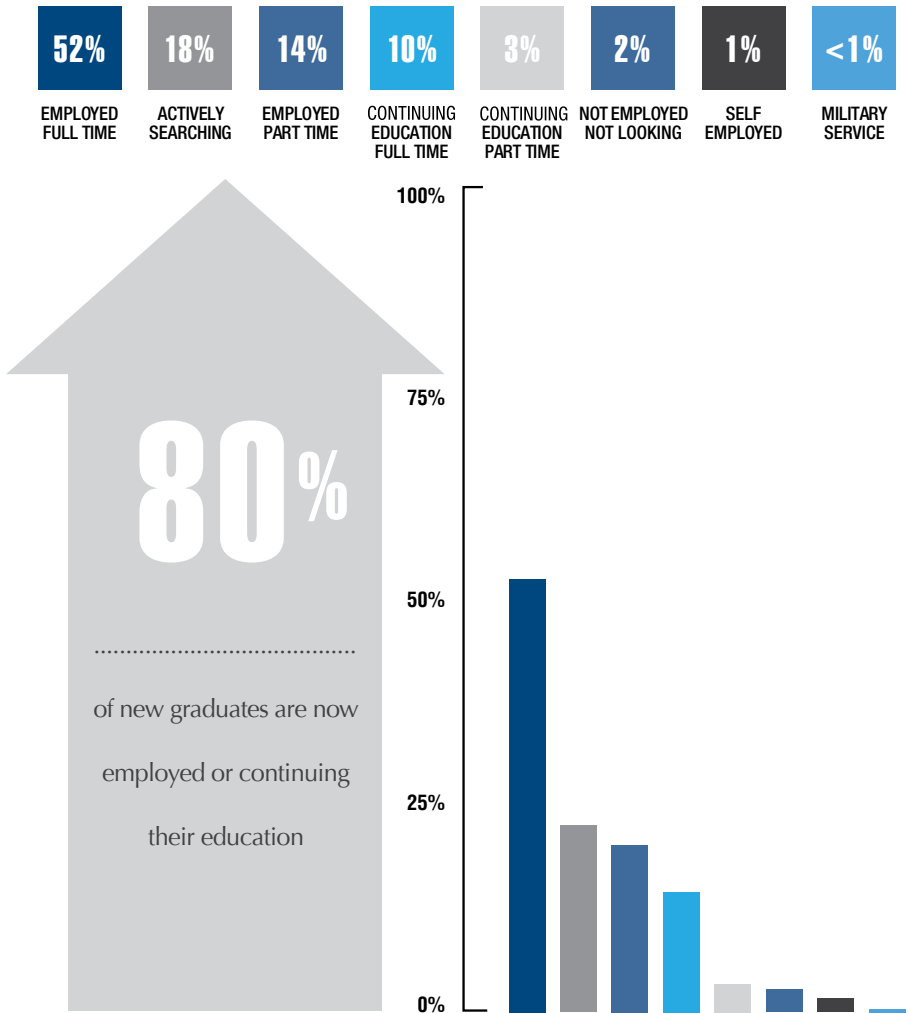


With **more than 200 degrees and certificates**, IPFW's opportunities for academic pursuit are as varied as our students.

College of Arts and Sciences	29%
College of Engineering, Technology, and Computer Science	19%
College of Health and Human Services	15%
College of Education and Public Policy	12%
Division of Continuing Studies	10%
School of Business	9%
College of Visual and Performing Arts	6%

WHAT'S HAPPENING AFTER GRADUATION

An incredible **80 percent** of new graduates are now employed or continuing their education. Despite the challenges of the current job market, **this number has actually grown** in the past year (compared to 77 percent of new graduates in 2013).

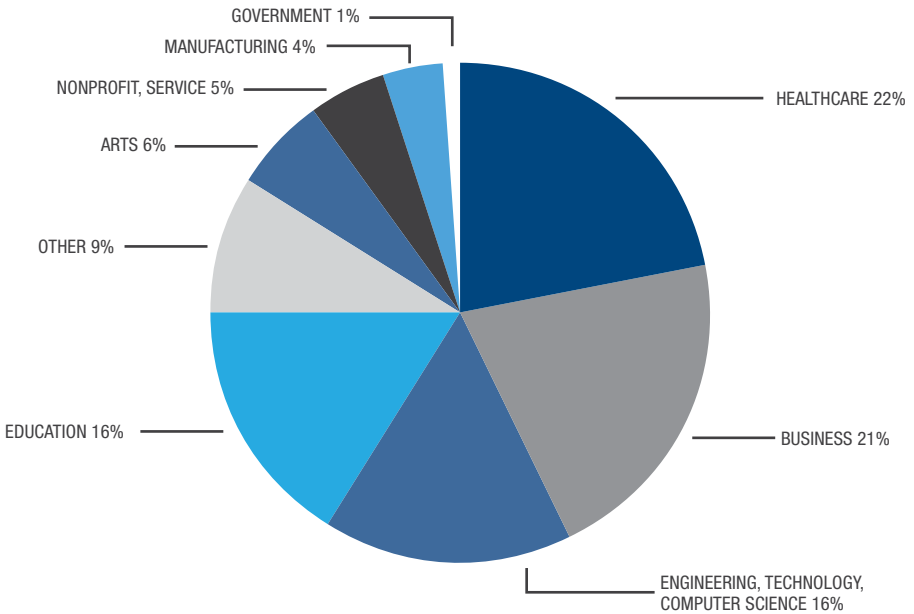


WHERE GRADUATES CONTRIBUTE THEIR KNOWLEDGE AND EXPERTISE



The class of 2014 has gone on to contribute their ideas and innovations to a diverse range of industries, nonprofits, and creative fields.

Twenty-one percent are in business-related occupations, including accounting services, advertising and public relations, consulting, banking and finance, human resources, and more. **Sixteen percent** now work in education fields, including higher education, and another **twenty-two percent** are in healthcare-related fields. **Sixteen percent** work in engineering, technology, and computer science.

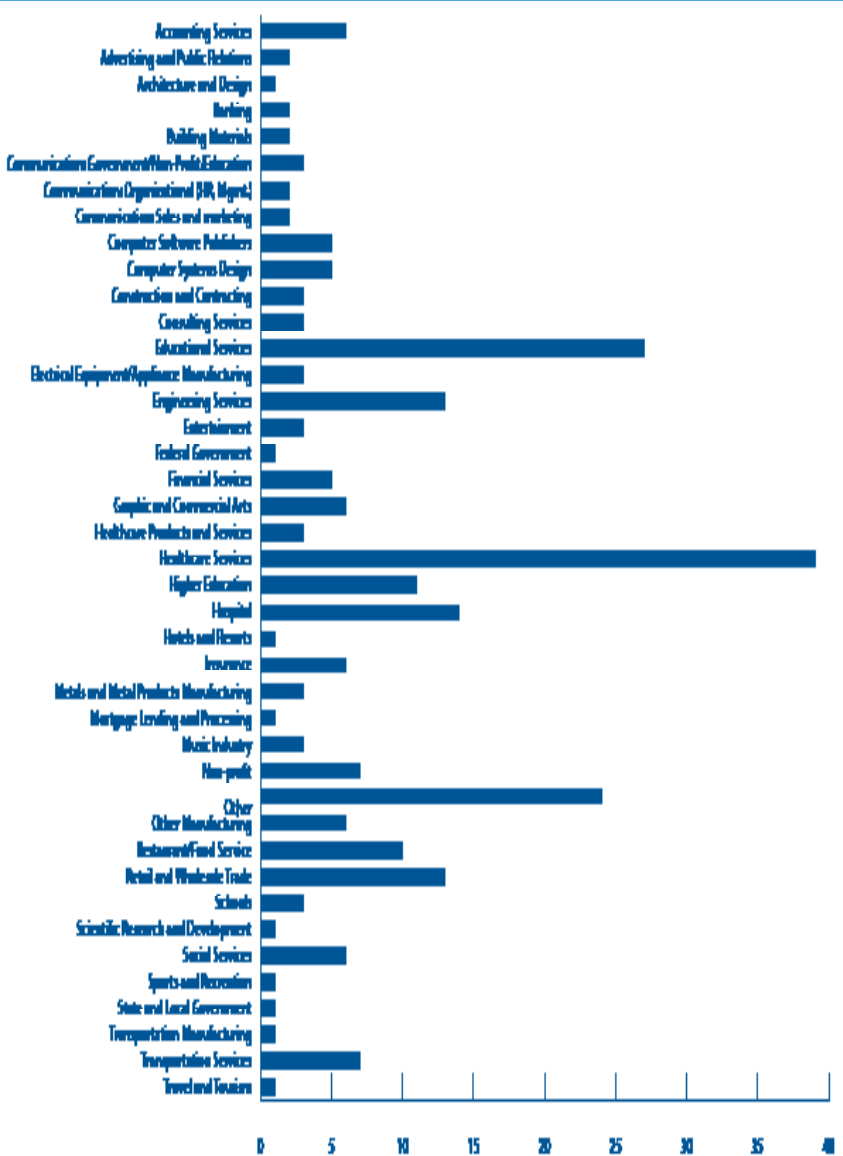


Healthcare.....	22%	Arts	6%
Business.....	21%	Nonprofit and Service	5%
Engineering, Technology, Computer Science.....	16%	Manufacturing.....	4%
Education.....	16%	Government	1%
Other	9%		

NOTE: Reflects percentage employed

INDUSTRY BREAKDOWN

SPECIFIC AREAS OF EMPLOYMENT



PURSUING CAREER AND ACADEMIC GOALS



IN PURSUIT OF CAREER GOALS

We asked our survey takers if their current occupation is related to their ultimate career goals. **An impressive 74 percent answered “yes.”**

ULTIMATE CAREER GOALS

CURRENT JOB'S RELEVANCE
TO ULTIMATE CAREER GOALS

74%

CURRENT JOB AND RELATED MAJOR

When asked if their current job was related to their academic pursuits while still in school, **67 percent said “yes.”**

ACADEMIC PURSUITS

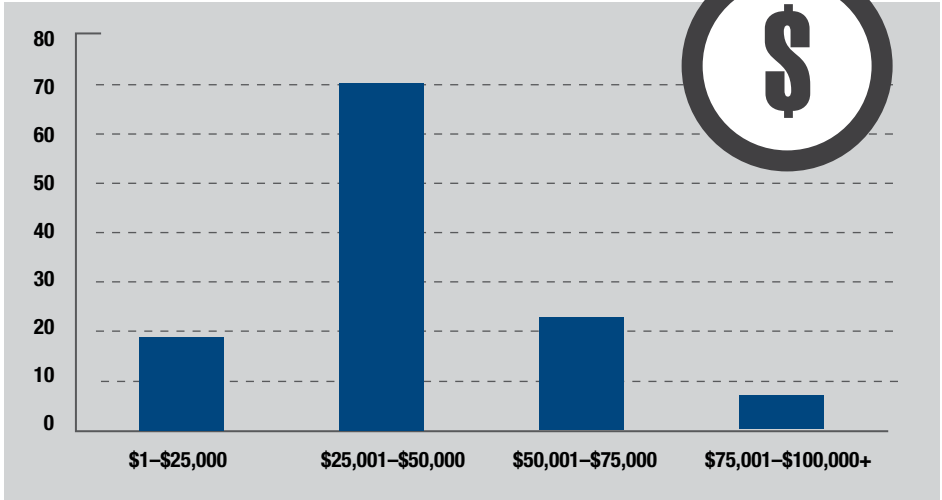
CURRENT JOB'S RELEVANCE
TO ACADEMIC PURSUITS

67%

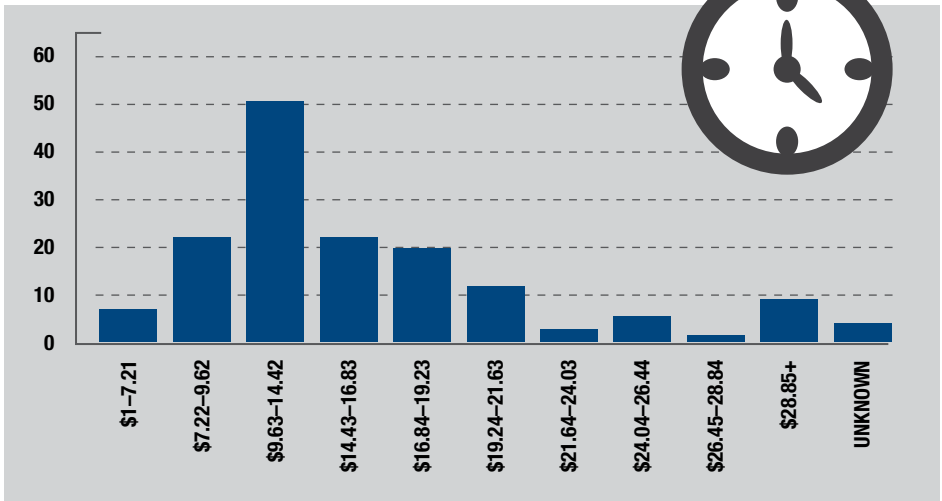
WHAT'S HAPPENING AFTER GRADUATION

We saw a **remarkable range of starting salaries** for the class of 2014. Some recent graduates now entering their chosen field report a **starting salary of more than \$75,000 a year.**

SALARY RANGE



HOURLY RANGE



WHAT ABOUT GRADUATE SCHOOL?



Thirteen percent of survey responders chose to **continue their education after graduation**, either in graduate or professional school. Fourteen are taking graduate-level classes part time, while forty-three are full-time graduate students.

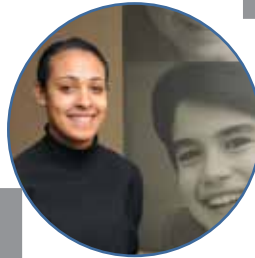
CONTINUE
EDUCATIONAL
GOALS

13%



43

FULL-TIME
GRADUATE STUDENTS



14

STUDENTS TAKING
GRADUATE-LEVEL CLASSES

IPFW'S CLASS OF 2014 IS REPRESENTED AT THE FOLLOWING INSTITUTIONS:

Academy of Art University
Columbia College
Florida Atlantic University
Huntington University
Indiana University
Indiana State University
Indiana Wesleyan
IPFW
Indiana University School
of Medicine

IUPUI
Louisiana State University
Loma Linda University
Ohio University
Oregon State University
Penn State University
Pittsburgh University
Purdue University
Purdue Pharmacy School
Slippery Rock University

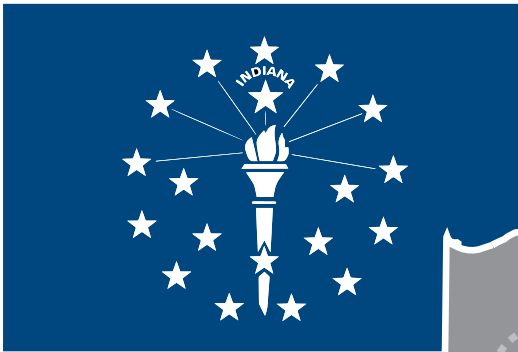
St. John's College—
Annapolis
Texas A&M
University of Indianapolis
University of Louisville
University of Saint Francis
University of Washington
University of Wisconsin—Madison
Wayland University
Widener University

EMPLOYMENT DESTINATION

BY GEOGRAPHIC REGION

The survey also asked our graduates where they would be residing next fall. The majority of graduates—91 percent—said they will continue to live and work in Indiana, **contributing to our state's cultural, intellectual, and industrial momentum.**

MOST MASTODONS



91 %

**CHOOSE TO STAY
IN FAMILIAR
STOMPING
GROUNDS**



HANDS-ON TRAINING BENEFITS



Forty-four percent of graduates in the class of 2014 became involved in experiential learning opportunities during their time at IPFW, gaining critical industry insights and on-the-job training as part of their ongoing education goals.

PRACTICUM

7%



SERVICE
LEARNING

4%



INTERNSHIP
23%



COOPERATIVE
EDUCATION

6%



EXTERNSHIP
JOB SHADOW

4%

REGIONAL EMPLOYERS

HIRING IPFW GRADUATES

<i>3 Rivers Federal Credit Union</i>	<i>Cold Heading Co.</i>	<i>Haines, Isenbarger & Skiba LLC</i>
<i>80/20 Inc.</i>	<i>Concordia Lutheran</i>	<i>Hallmark Home Mortgage</i>
<i>A&Z Engineering</i>	<i>Consultant EPIC</i>	<i>Hill-Rom</i>
<i>Aboite Dental/IPFW</i>	<i>CTG</i>	<i>Holiday Inn</i>
<i>Adams Memorial Hospital</i>	<i>D&J Tonner Farms</i>	<i>Hopebridge Pediatric Specialist</i>
<i>Adaptive Nursing and</i>	<i>Defender Direct</i>	<i>Hospital Laundry Service</i>
<i>Rehabilitation</i>	<i>DeKalb High School</i>	<i>Human Technologies Inc.</i>
<i>Agri Stats Inc.</i>	<i>Delta</i>	<i>Indiana CPU</i>
<i>Allen County Public Library</i>	<i>Dexter Axle</i>	<i>Indiana First Steps</i>
<i>Ancilla College and Ivy Tech—</i>	<i>Donavan Insurance Services</i>	<i>Indiana State University</i>
<i>Kokomo</i>	<i>DOZ</i>	<i>Integrity Financial and Tax</i>
<i>Anthony Wayne Services</i>	<i>Dr. Fortin</i>	<i>Consulting</i>
<i>Aptera</i>	<i>Duesenburg Inc.</i>	<i>IPFW</i>
<i>Ash Brokerage</i>	<i>eGenuity</i>	<i>IU Bloomington</i>
<i>Aspen Dental</i>	<i>Electric Motors and Specialties</i>	<i>Ivy Tech</i>
<i>Automated Group Administration</i>	<i>Elwood Staffing</i>	<i>Lab Support/PPG</i>
<i>AWS</i>	<i>EM Tax</i>	<i>Leaders Staffing LLC</i>
<i>BAE Systems</i>	<i>Enspire Software</i>	<i>Life Science Exhibits</i>
<i>Barnes and Noble</i>	<i>Ethan Allen</i>	<i>Ligné Agency</i>
<i>Bayer Bee Care Center NC</i>	<i>Exelis</i>	<i>Lincoln Financial Group</i>
<i>Bi County Services</i>	<i>Extension Healthcare</i>	<i>Lutheran Health</i>
<i>Biomet</i>	<i>Fleming Excavating</i>	<i>Lutheran Health Network</i>
<i>Bluffton Harrison Elementary</i>	<i>Fort Wayne Autism Center</i>	<i>Mind's Eye Graphics</i>
<i>School</i>	<i>Fort Wayne Center for Learning</i>	<i>Mistry Motors</i>
<i>Briarwood Village</i>	<i>Fort Wayne Habitat for Humanity</i>	<i>MorphoTrust USA</i>
<i>Brigadoon Financial</i>	<i>Fort Wayne Newspapers</i>	<i>Nabisco DSD</i>
<i>Brotherhood Mutual Insurance</i>	<i>Franklin Electric</i>	<i>National Recreation Systems</i>
<i>Business Promotion</i>	<i>Frontier</i>	<i>Nestle</i>
<i>CATV</i>	<i>Fort Wayne Community Schools</i>	<i>Nexstar/WFFT TV</i>
<i>Center For Nonviolence</i>	<i>Garrett State Bank</i>	<i>NIBCO INC.</i>
<i>Ceruti's Catering</i>	<i>Gold Shield</i>	<i>Nidec</i>
<i>Children First Center</i>	<i>Golden Rule Academy</i>	<i>NIMCHN</i>
<i>City of Fort Wayne</i>	<i>Google</i>	<i>Nisco</i>
<i>City of Fort Wayne, City Utilities</i>	<i>Grace College</i>	<i>Northeast Indiana</i>
<i>Engineering</i>	<i>Granite Ridge Builders</i>	<i>Innovation Center</i>



Northeastern Center
Northrop Grumman
Otis Bowen Center
Parker Hannifin
Parkview Health
Parkview Home Health
and Hospice
Parkview Physicians Group OBGYN
Parkview Regional Medical Center
Parkview/University of St. Francis
Partners HealthCare
Pathfinders Kids Kampus
Pro Seal & Plastics LLC
ProFed
Purdue University Lafayette
Quality Applied Systems INC
Rea Magnet Wire
Regal Beloit
Renaissance Village
Restoring the Path
S&S Contracting
Saint Anne Home and
Retirement Community
SBG Inc.
SCAN
Schneider Electric
Scientific and Regulatory
Consultants Inc.
Setex Inc.

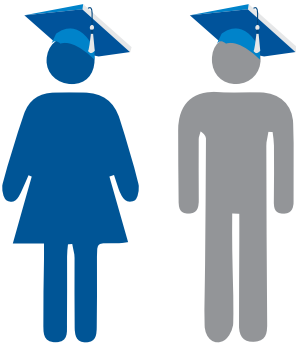
Sherwin Williams
Sirva
South Adams High School
St. Joseph Hospital
St. Vincent de Paul School
Starbucks
Steel Dynamics
Summit CPA Group
Sweetwater Sound
Taylor Made Glass
The Law Offices of Wright,
Lerch, and Litow
The Learning Community
Thomas Blake, DDS
Tippmann Group
Todd P. Briscoe, DDS
Total Quality Logistics
Transworks
Trelleborg Sealing Solutions
Tuthill
Two Men and a Truck
United States Air Force
United Technologies
UPS
U.S. Department of Agriculture
U.S. Senate
Value City Furniture
Vera Bradley
Vestil Manufacturing Corp

Vitreoretinal Consultants of
Fort Wayne
Volunteers of America
Walgreens
Wal-Mart
WANE TV
Warsaw Chemical
Wayne Fasteners
WeCare TLC
Wells County Public Library
Wellspring Interfaith
Social Services
West Noble School System
Whitko Schools
Whitley County Auditor
Whitley County Government
YMCA
Zimmer, Inc.



CAREER SERVICES

INDIANA UNIVERSITY
PURDUE UNIVERSITY
FORT WAYNE



LEARN MORE ABOUT IPFW GRADUATES

MAKING AN IMPACT ON OUR REGION

AT ipfw.edu/career

Phone: 260-481-0689